

Who is TalentClick?

In over 40 countries globally, smart employers are hiring and training better employees using the world's leading risk-based personality assessments. We're the experts who built and started this online revolution, where technology meets risk-focused testing, at an affordable monthly price. *Go ahead, test everyone!*

Background checks and reference checks are important. But they only help you see what's in the PAST. Our predictive analytics help you see how people are likely to behave in the FUTURE.

Increase POSITIVE events:

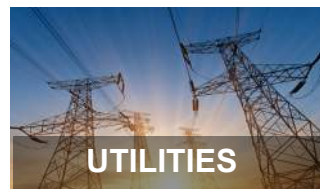
- ✓ Better hires
- ✓ Improved employee satisfaction
- ✓ Enhanced morale and culture
- ✓ Safer workplaces
- ✓ Increased productivity
- ✓ Increased profitability
- ✓ Enhanced brand
- ✓ More time for other duties

Decrease NEGATIVE events:

- ✗ Fewer 'bad hires'
- ✗ Less violence, harassment
- ✗ Less theft, fraud
- ✗ Reduced employee turnover
- ✗ Decreased property damage
- ✗ Fewer injuries, fatalities
- ✗ Less incident paperwork
- ✗ Less bad publicity

Who is using TalentClick?

From multi-billion dollar companies to small firms in various industries, our solutions fit everyone.



What are our Solutions?

Each TalentClick report contains actionable feedback and recommendations to reduce risks involved with making people decisions. All of our assessments uncover strengths AND risk areas through our proprietary predictive analytics.



Workstyle & Performance Profile

Reveals each participant's workstyle, strengths and areas for improvement. The WPP results can be used for hiring, training and performance management.



Safety Quotient™

Identifies the high-risk personality traits (impulsiveness, distractibility, rule-resistance, irritability, etc.) that lead to human error and preventable workplace incidents.



Driver Safety Quotient™

Gain insight into a driver's likelihood of crashes, near misses, traffic violations, property damage and more. The DSQ™ helps ensure a safer roadway for everyone.



Work Values

Measure an individual's values to assess whether they are a 'fit' for your organization. The WV can be used for hiring candidates and for performance management with current employees.



Cognitive Quotient

Assess front-line workers in industrial settings to measure verbal, numerical and spatial reasoning. CQ ensures you hire workers who have the cognitive capacity required for the role.



English Proficiency

Measure a person's ability to review written English, use correct grammar, understand the meanings of words and type error-free sentences.



Leadership Profile

Helps hire, train, and develop an organization's most valuable asset - its leaders. Measures social, interpersonal, teamwork and conflict management style among other leadership traits.



Leadership 360°

Get feedback from your managers, peers and subordinates to get a well-rounded picture of a leader or manager's work performance.

Why Choose TalentClick?

Individual assessments available by industry and job category.

1. A unique focus on "risk" means you can reduce bad hires, employee turnover, violence, theft, fraud, property damage, injuries, and more.
2. Better interviews by using our pre-hire interview questions tailored to each person's results.
3. Better training and coaching of new hires by using our performance management tips.
4. Easier testing by using our cloud technology. Most of our tests take 10-20 minutes to complete. Everything is online, either on a desktop computer or smart phone.
5. Faster results with our 30 minute turnaround time.
6. Amazingly affordable pricing means you can go ahead and test all applicants! Prices start as low as \$5/report.
7. We are not re-sellers, which is important, because you want access to us, the test creators and publishers.

